

PICKSAFE™

Pallet Rack Safety Gate



Compliant



Buy American Act
Compliant



Personnel Fall
Protection



Self-Closing

PICKSAFE™ PALLET RACK SAFETY GATE (PRG)

Self-closing For Ultimate Personnel Protection

The PickSafe Pallet Rack Safety Gate is a self-closing, dual-gate system designed to fit 3-inch columns. After palletized material is forklifted through the gate opening, the spring-loaded system self-closes along the mezzanine edge, protecting personnel from dangerous falls. This gate system is ideal for elevated pick modules with pallet flow systems, elevated working platforms and mezzanines.

Easy To Operate

- Dual-gate system is always in place, allowing one-way pallet flow while protecting employees from the mezzanine edge
- Gate self-closes by spring-loaded hinge
- Available in standard sizes to fit 60-inch-wide and 96-inch-wide openings (custom sizing available)

Improves Safety

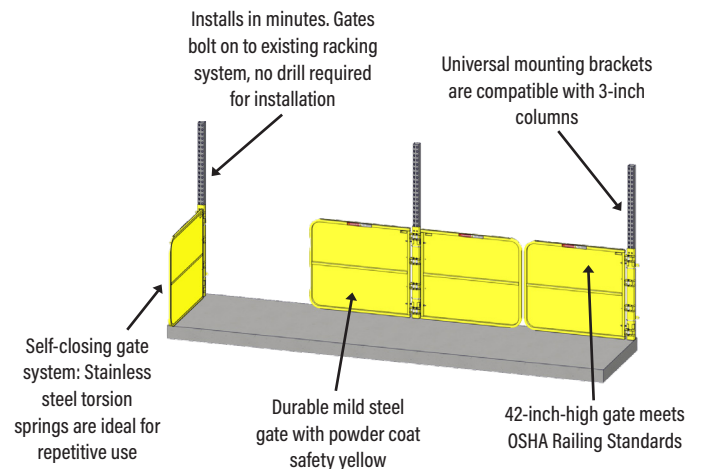
- Complies with OSHA Standards 1910.28 and 1910.29
- Protects personnel on elevated working platforms from accidental falls

Quick Installation

- Universal mounting brackets are compatible with 3-inch columns
- Installs in minutes
- No drilling required – gates bolt on to racking system

Long-Lasting And Economical

- Durable mild steel gate construction with powder coat safety yellow finish
- Stainless steel torsion springs are ideal for repetitive use
- Requires little or no maintenance
- Economical cost





PICKSAFE™

Pallet Rack Safety Gate

STANDARD TECHNICAL DATA

Material:

- Standard Dimensions: 60" or 96" opening width
- Gate: Formed 1-1/4" square, 11-gauge steel tubing; 18-gauge mild steel sheeting factory welded in place; includes two (2) 3/8" stop bolts, zinc-plated
- Hinge Post: 10-gauge mild steel
- Torsion Springs: 17-7 stainless steel torsion springs ensure safe and consistent operation; includes eight (8) torsion springs per gate system
- Gate Operation: Allows for 90° travel

Hardware:

- Standard mounting hardware includes zinc-plated U-bolts, washers and nuts

Finish:

- Finish on all exposed surfaces to be powder coat safety yellow

Performance Rating:

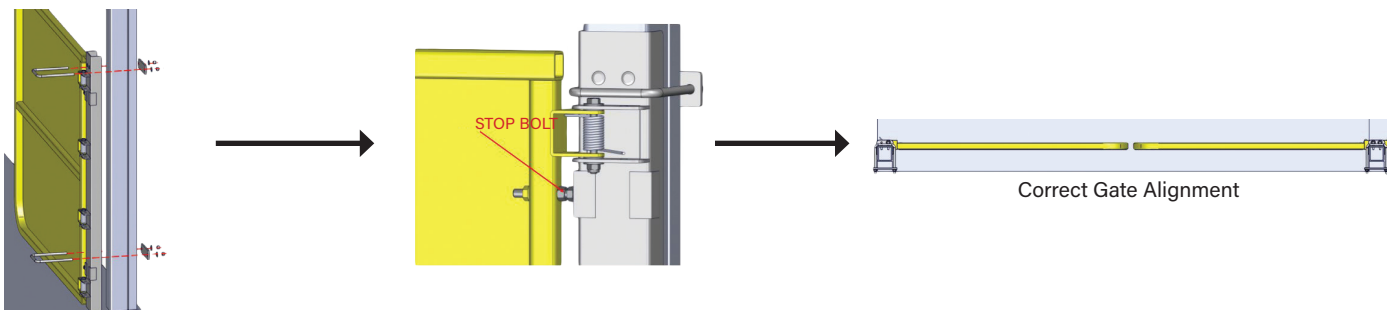
- Engineered and tested to comply with OSHA Standards 1910.28 and 1910.29, relative to guarding openings, at the time of manufacture

Installation:

1: Attach mounting bracket to existing 3-inch columns at desired height; secure gate to rack post using U-bolts

2: Adjust stop bolts for proper gate alignment

3: Repeat steps 1 and 2 for additional gates



Measuring Guide:

Model Number	Clear Opening (A)	Opening Width (B)	Gate Width (C)	Gate Height (D)
PRG-60	58-1/4"	60"	30"	42"
PRG-96	94-1/4"	96"	48"	42"

*Multi-bay configurations utilize shared mounting bracket.

